



Compatibility Check with Line 6 Monkey



Download Line 6 Monkey

Go to www.line6.com/monkey — you'll see the line6.com Support section's Software Downloads page with the latest version of Line 6 Monkey ready for you to download.

LINE 6 BELIEVE.

Products Artists News **Support** Club Store

New User? [sign up](#) [sign in](#) Global Sites

SUPPORT

SOFTWARE DOWNLOADS

Select your Line 6 product, the software upgrade or accessory for that product, and the operating system of your computer.

Product: All | Software: Line 6 Monkey | OS: Windows XP | [Show](#) [Help?](#)

Software	Version	Released	Notes
Line 6 Monkey More Info			
Works with: GuitarPort PODxt PODxt Pro Vetta II Head Vetta II Combo Bass PODxt Bass PODxt Pro Flextone III PODxt Live Variax Variax USB Interface Variax Acoustic	1.08	7/20/05	MD5: 2ab6d52a5ee098be21baa5a951216847
			Download Now 1.45 MB
			Windows XP Windows 2000

If your **Operating System** isn't already shown here, choose yours and click the **Show** button

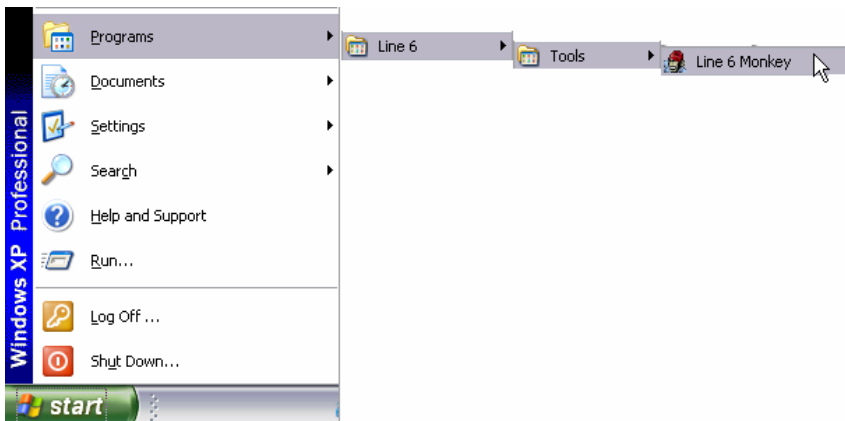
Click the **Download Now** link to download the Line 6 Monkey installer

Once the Monkey installer has been downloaded, run the installation. The installer will guide you through a few simple steps and complete the installation for Line 6 Monkey in just minutes.

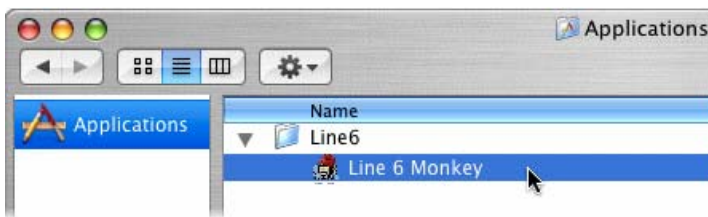
Note to Laptop computer owners... It is important that you boot your laptop while your AC power adaptor is connected (rather than from battery power) before running Line 6 Monkey's compatibility check. Booting a laptop from battery power can often set it into a "power saving" mode which can result in Monkey not accurately testing for the full performance of your processor.

Launch Line 6 Monkey

On **Windows**, go to **Start > Programs > Line 6 > Tools** and select **Line 6 Monkey**

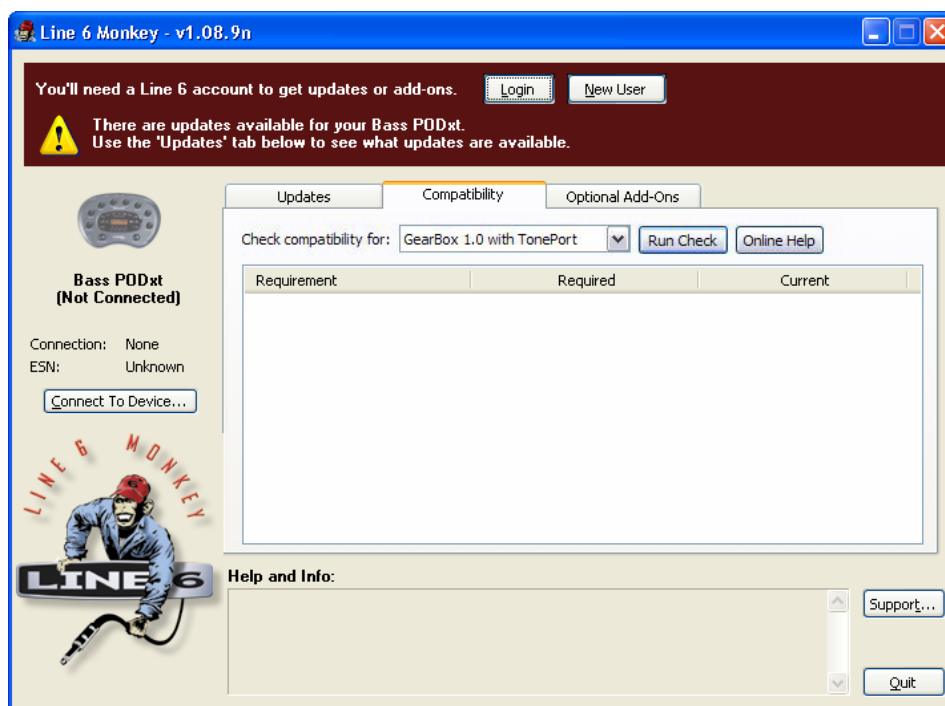
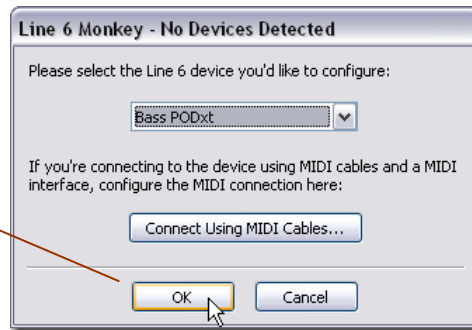


On **Mac**, launch the **Finder** and go to **Applications > Line 6** and choose **Line 6 Monkey**



You will next be prompted to choose a Line 6 device. It is **not** necessary for you to choose a particular device for this step since we are not configuring a Line 6 hardware device – just click **OK** to proceed launching Monkey.

Click **OK** to proceed



Ignore all messages and "alerts" that may show at the top of Monkey's window. You don't need a Line 6 account to run the Compatibility check, and you do not need the items that may be available from the Updates and Optional Add-Ons tabs.

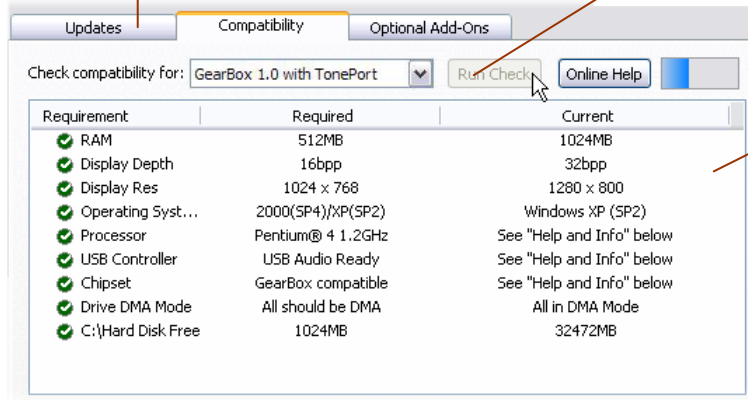


Run a Compatibility Check

Monkey will check to see if your computer is ready for GearBox and TonePort.

Click the **Compatibility** tab

Click the **Run Check** button



Monkey will immediately start scanning your system and populate the window with the results

For each **Requirement** at the left, you'll see the minimum requirement for TonePort/GearBox in the **Required** column, and your computer's specification for this item in the **Current** column. For all items that meet or exceed the Required specification, a green check will appear at the left. In the example above, all items meet or surpass the requirement. If your system meets all the requirements, it is fine for use with the TonePort hardware and GearBox software!



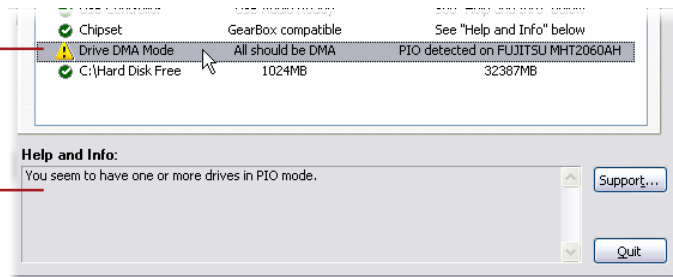
If a Requirement does **not** meet the minimum, you will be alerted with a dialog – just click the OK button to acknowledge the alert:



A yellow alert symbol will also appear to the left of any Requirement that did not pass the check. Click on an item with this alert and read the information that appears within the **Help and Info** section at the bottom of the dialog.

An alerted **Requirement**

A description of the issue is listed in the lower pane



Online Help

For more information about any alerted requirements, click Monkey's **Online Help** button and view the **Line 6 Monkey Compatibility Check** documents on the TonePort online help page. You'll be prompted there to create a Line 6 account or log in to an existing account in order to view the online help.

A note about Processor support...

The listed Requirement for TonePort/GearBox on Windows is noted as an Intel® Pentium® 4 1.2 GHz, and TonePort/GearBox was developed and tested with this processor architecture as its recommended system. However, there are several other models of processors that have undergone limited testing and can be used with TonePort/GearBox. For example, Intel® Pentium® M and Celeron®, AMD Athlon™, Duron™ and Sempron™ processors that offer an equivalent clock speed as the posted requirements have been demonstrated to work well with TonePort and GearBox.

Monkey is actually smart enough to know there are several other competent processor types and will also allow processors that offer equivalent or faster clock speed as well. If your Windows PC has a non-Pentium 4 processor, then this Line 6 Monkey compatibility check will still test your processor and inform you if your system meets the processing requirements for TonePort/GearBox.